

CERTIFICATE OF LOCATION OF GOVERNMENT CORNER

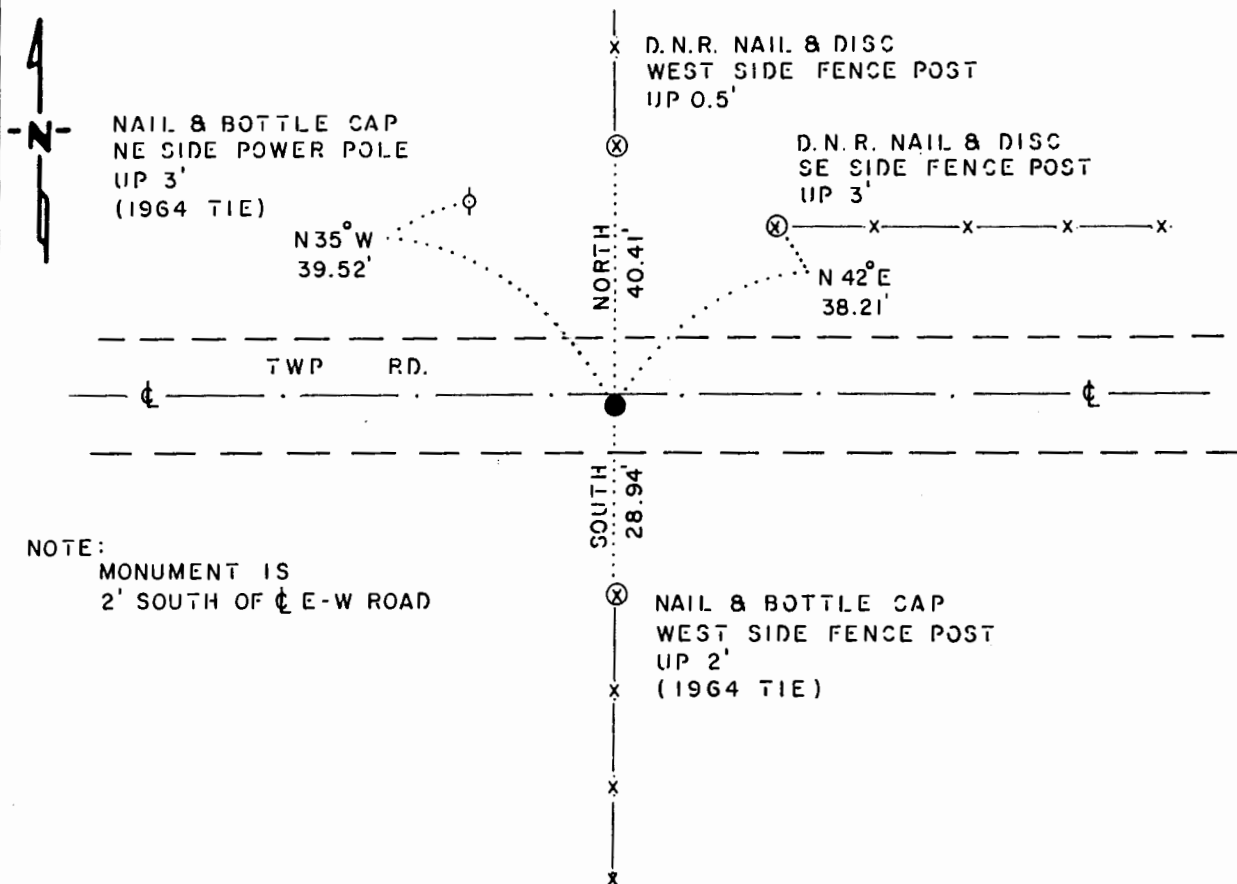
NORTH QUARTER Corner of Section 13, Township 107 N., Range 40 W., 5th P.M.

STATE OF MINNESOTA, County of MURRAY

At the corner location shown on the sketch:

- On 7-9-85 found a RAILROAD SPIKE, DOWN 0.2'
DATE
- left monument as found, lowered monument, removed monument (explain)
- On 8-14-85 placed a 1 1/4" x 1 1/4" x 10" PERFORATED STEEL TUBE WITH ALUMINUM CAP STAMPED "D.N.R. SURVEY MARKER", DOWN 0.4'
DATE

SKETCH OF REFERENCE TIES



NOTE:
MONUMENT IS
2' SOUTH OF ϕ E-W ROAD

BEARINGS OBSERVED WITH COMPASS

Statement of evidence relative to this corner location is on back of page.

J. B. M 9-10-85
G-950

I hereby certify that this document and the data contained herein was prepared by me or under my direct supervision.

Lowell R. Pomeroy Jr. 10-9-85
SIGNATURE DATE

Registration No. 17005
 Land Surveyor, Professional Engineer
 County Surveyor, County Engineer

OFFICE OF THE COUNTY RECORDER

County of _____

I hereby certify that this document was filed in the Co. Recorders office at _____ .M. on the _____ day of _____ A.D., 19__

County Recorder _____

By _____, Deputy

DOCUMENT NO. _____

North Quarter Corner Section 13, Township 107 North, Range 40 West

This corner was originally established by the U. S. General Land Office survey in 1861. The government notes show corner marked with a wood post set in mound of earth with pits and trench dug around the mound.

In March 1985, the DNR Bureau of Engineering contacted the Murray County Offices of the Recorder and Highway Engineer for corner information.

The following information was obtained from the DNR Bureau of Engineering's Office:

A 1964 survey shows that a railroad spike was set for corner at the intersection of the center line of an east-west road and fences north and south. The following ties are shown to corner:

nail and bottle cap on northeast side of power pole, northwest, 39.61 feet

nail and bottle cap in west side of brace post, north, 39.95 feet
edge of steel fence post, northeast, 28.15 feet

nail and bottle cap in west side of corner fence post, south, 28.94 feet

2654.75 feet from the northwest corner of Section 13

A 1971 survey shows the corner as an in-place railroad spike. Corner is shown 2654.75 feet from the northwest corner of Section 13.

On July 2, 1985, the DNR Bureau of Engineering hired a backhoe operated by Larry Ruppert of Currie to dig for evidence of this corner. A 4 foot north-south by 10 foot east-west hole was dug, the center being the intersection of the center line of an east-west road and fences north and south. A railroad spike was found down 0.2 of a foot. Stones were found throughout excavated area, but no distinguishing marks were found on them. Searched for and found record ties as shown on sketch of ties. The railroad spike was found to be:

2654.51 feet from the northwest corner of Section 13

Accept the railroad spike as the location of the corner and replaced it with a DNR Survey Marker.

Traverse information is available from the DNR Bureau of Engineering.